



**Ontario East Wood Centre
& ECO-INDUSTRIAL PARK**

Building Partnerships for Eco-Industrial Development

Sandra S. Lawn, BSc, MPA
EOMF Project Leader
Charting Your Course: Mapping
New Directions
EDCO conference, Toronto
February 6, 2008



Outline of Presentation

1. History
2. The Ontario East Wood Centre & Eco-Industrial
3. Introduction to the concept
4. The networks and the partnerships
5. Dealing with complexity
6. Dealing with the science
7. Challenges
8. Essential Partnerships



Ontario East Wood Centre
& ECO-INDUSTRIAL PARK

History

- Haudinasaunee perspective
- Mixed wood forests plus
- Dr. Ross Silversides' inspiration
- South Grenville Economic Development Commission initiative
- Industry Canada support
- Noranda Forest Products
- Value Added Wood Centre for Edwardsburgh Township: European search for markets late 1980's to 1992
- Project "on hold" until 2004



Ontario East Wood Centre
& ECO-INDUSTRIAL PARK

An invaluable partnership for EOMF; Principles of the Haudinasauni Naturalized Knowledge System

- Earth is our mother
- The spiritual world is close to us
- Cooperation is the key to survival
- Responsibility is the best practice
- Knowledge is powerful only when shared
- Everything is connected to everything else
- Place is important

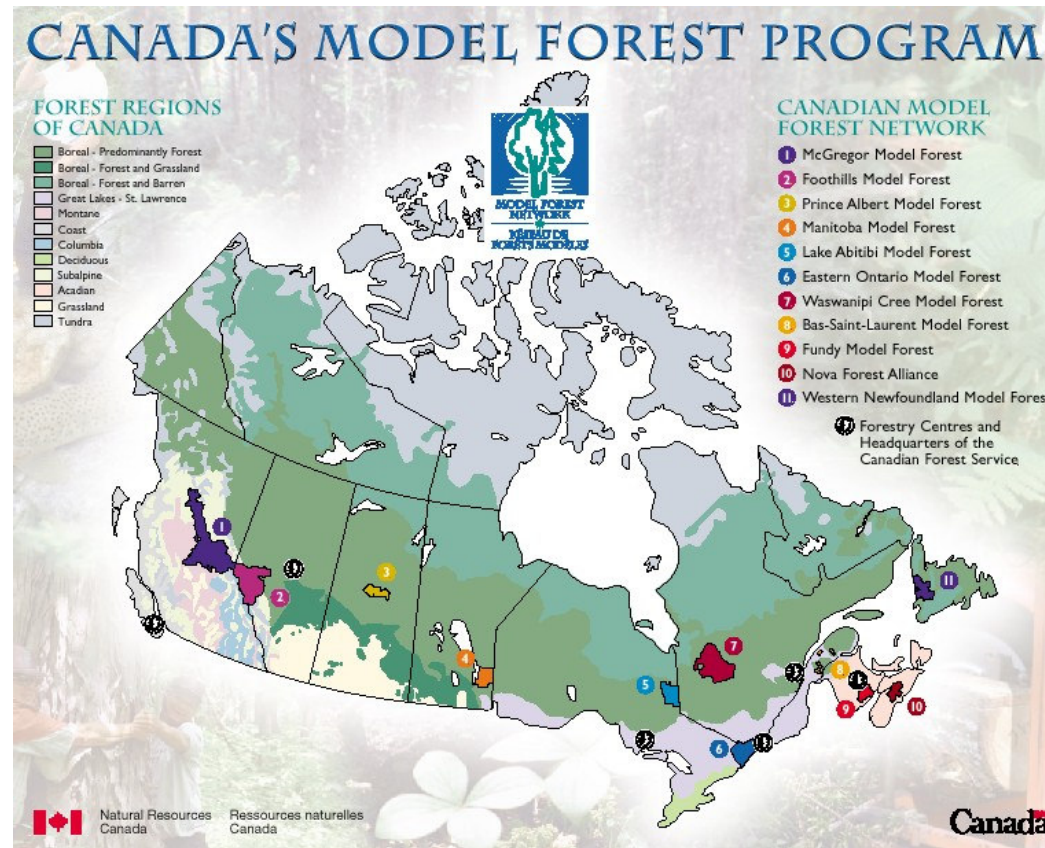
(Henry Lickers:
Director of the Environment,
Akwasasne)



Ontario East Wood Centre
& ECO-INDUSTRIAL PARK



The Eastern Ontario Model Forest 1992-2007 - 15 years of solid partnership building



Ontario East Wood Centre
& ECO-INDUSTRIAL PARK

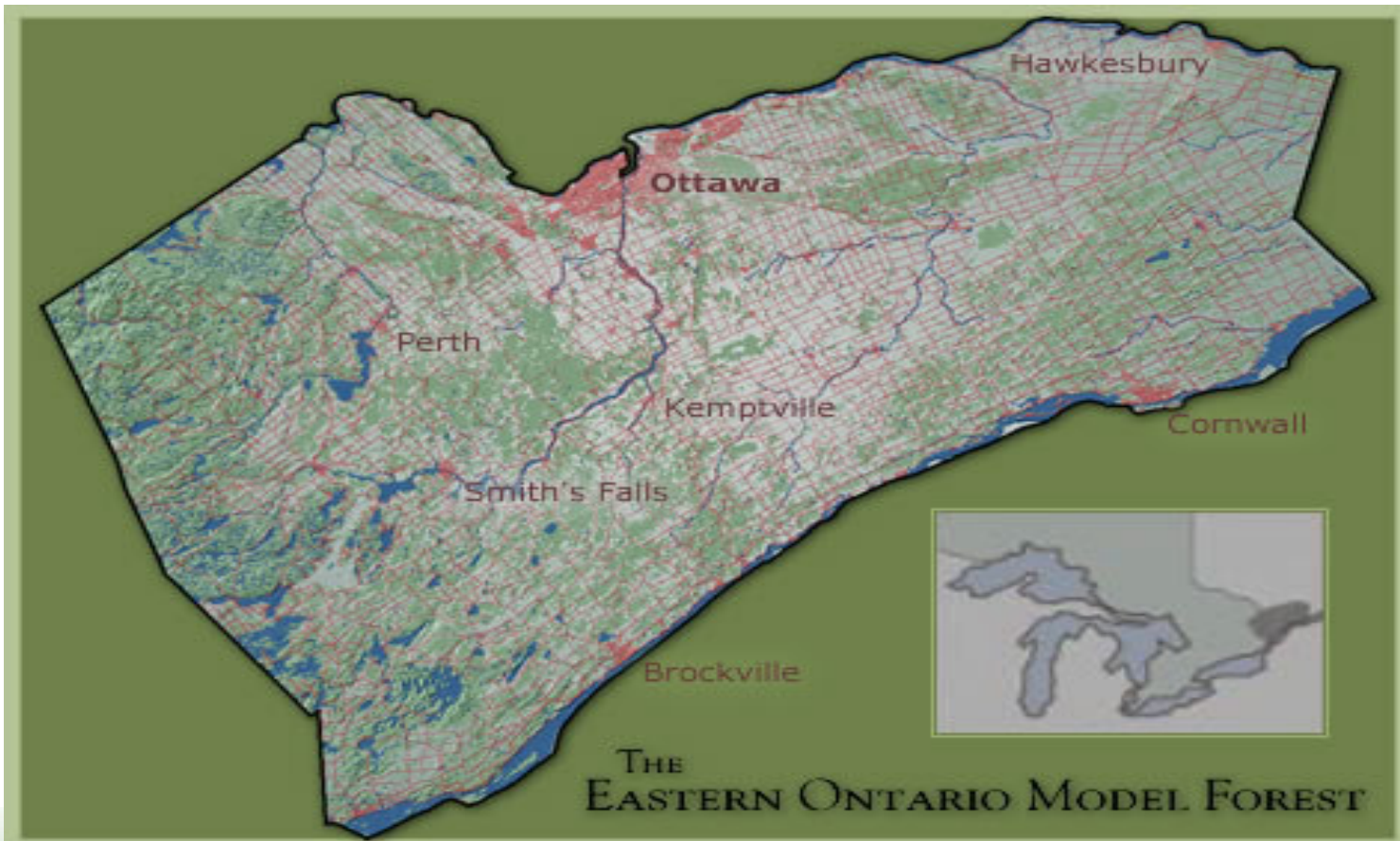


FOREST COVER —IN— EASTERN ONTARIO



Ontario East Wood Centre
& ECO-INDUSTRIAL PARK

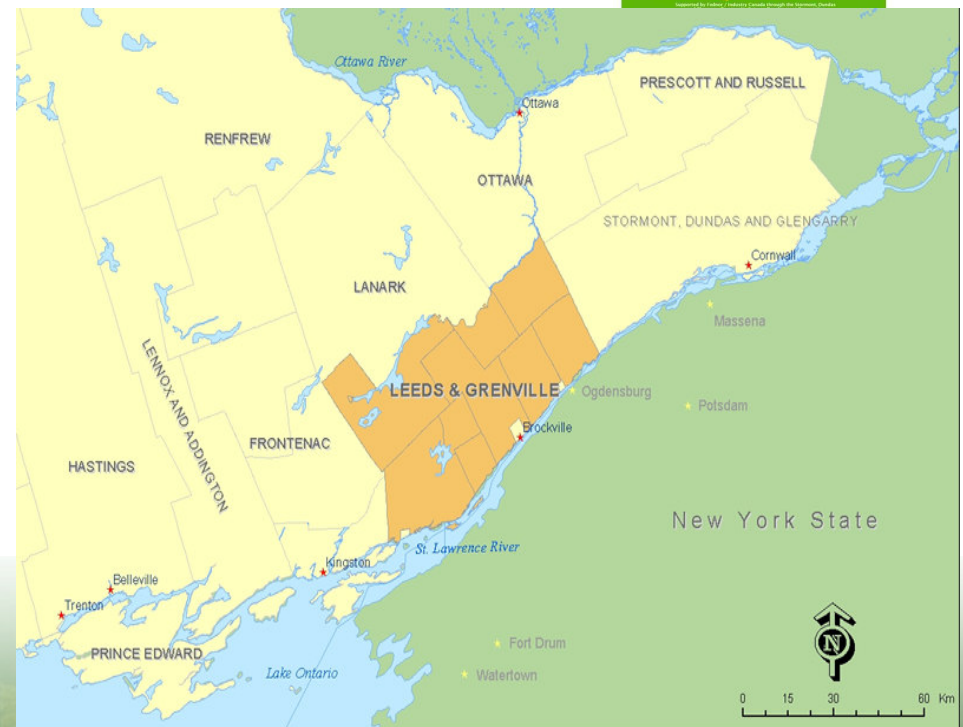
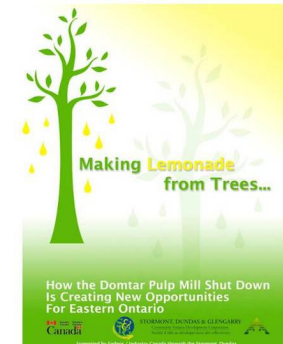
The EOMF - a model of working partnerships; private and public



Ontario East Wood Centre
& ECO-INDUSTRIAL PARK

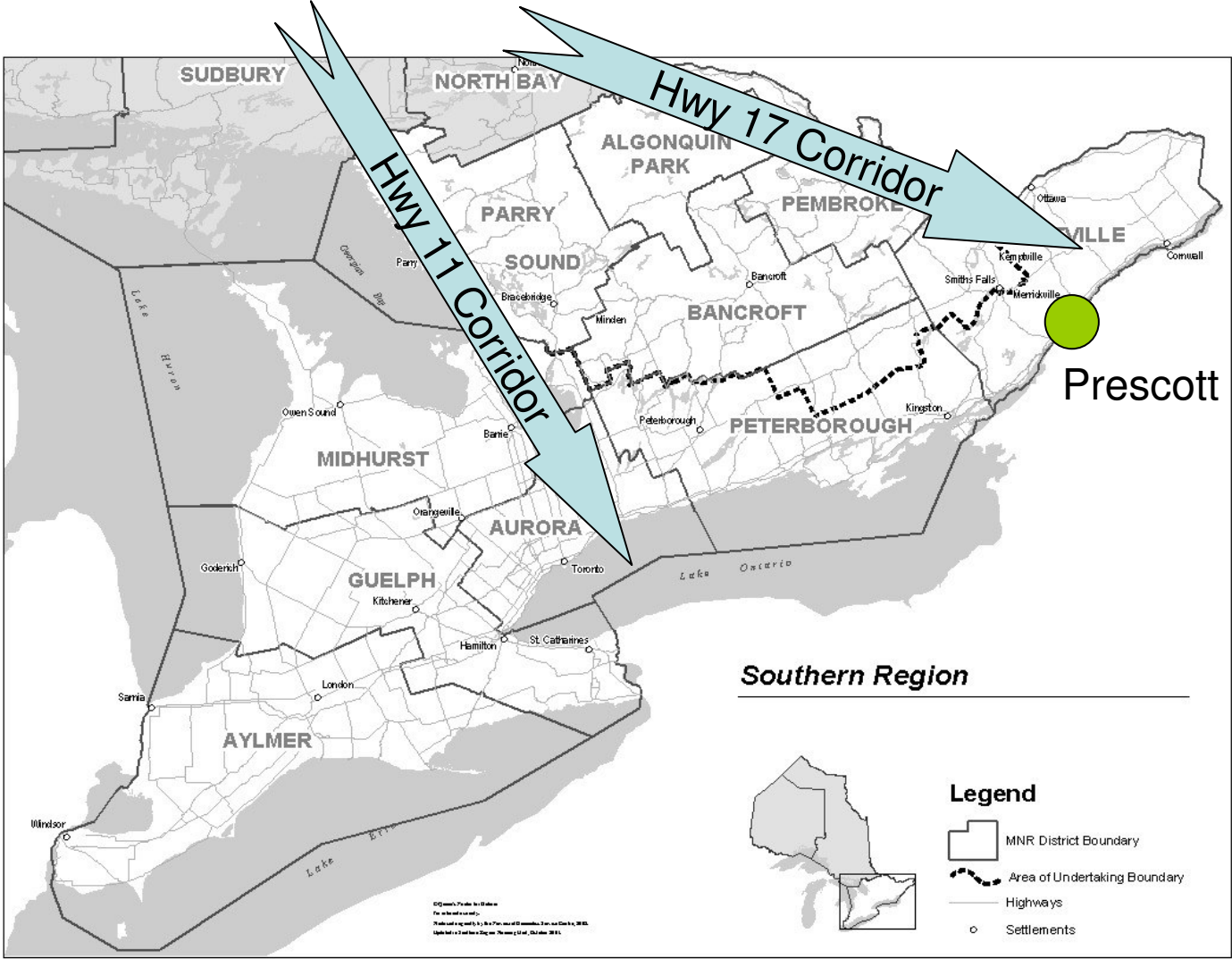
And now the CFS Forest Communities Program: 2007 -2012

- Eleven sites chosen across Canada
- A Forest Sector in Transition
- Energy, Economics and Ecology
- Need for Ecological Goods and Services
- Bridging the Disconnect Between Urban and Rural
- Forest Health, Dynamic Ecosystems and Species at Risk
- And in EOMF: the Wood Centre reinvented



Ontario East Wood Centre
& ECO-INDUSTRIAL PARK

Supply of wood: 45 mills generate 1 billion board feet of SPF lumber annually, flowing into Southern Ontario using these two highway systems



Ontario East Wood Centre
& ECO-INDUSTRIAL PARK

“Bioeconomy” definition fits well:

An economic system in which biological resources like forests, agriculture, aquatic ecosystems provide not just food, feed and fibre, but also energy, chemicals and materials, as well as environmental benefits such as greenhouse gas emission reductions.

Source
BIOCAP



Ontario East Wood Centre
& ECO-INDUSTRIAL PARK



**Ontario East Wood Centre
& ECO-INDUSTRIAL PARK**





Ontario East Wood Centre
& ECO-INDUSTRIAL PARK

The OEWC - bringing partners together

- Community interest
- Forest sector in transition
- Energy supply and security
- Sustainability of forests and communities
- Globalization
- Local Leadership
 - Wood Centre Committee
 - Steering Committee guiding project
- Tapping World Class Expertise
 - Technical Advisory Group of scientists, academia, industry, government,
 - “multi-disciplinary”
- Enterprise Advisory Group
- Region-wide value chain



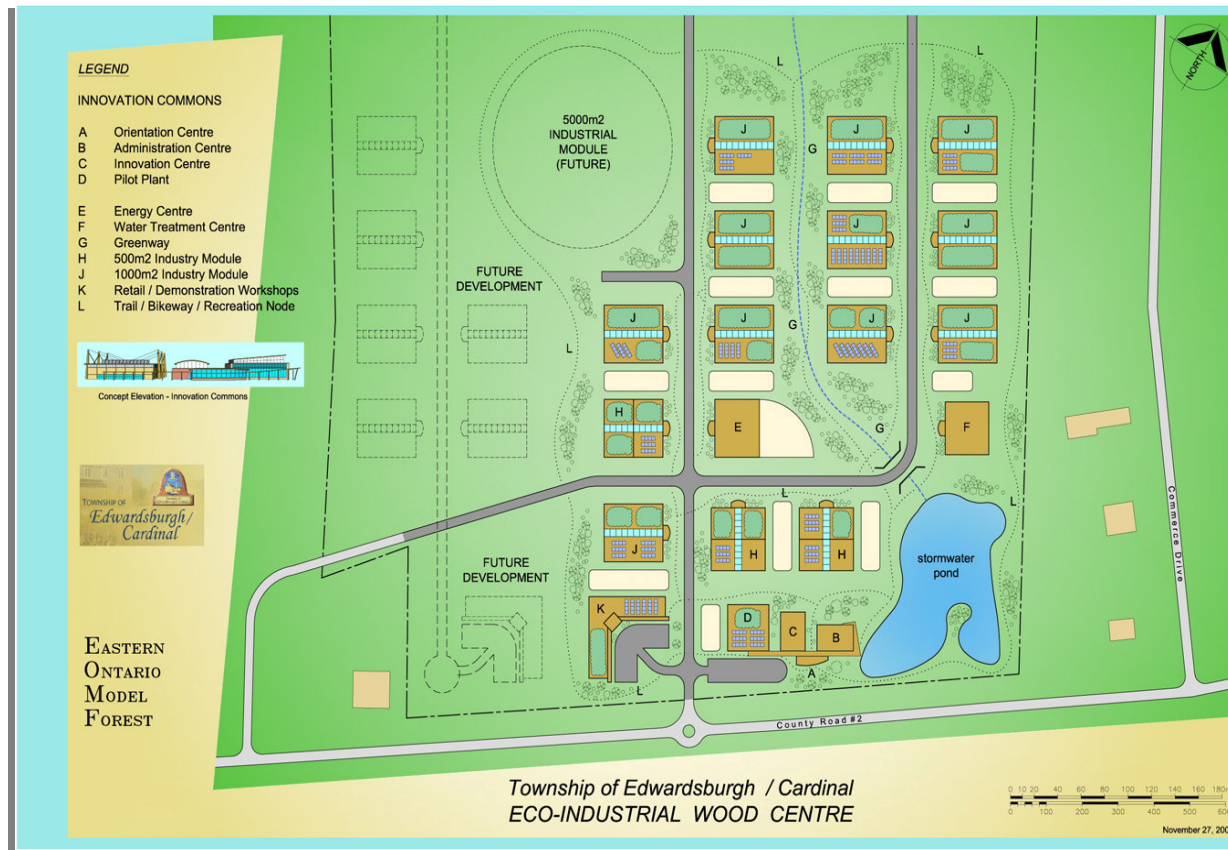
Ontario East Wood Centre
& ECO-INDUSTRIAL PARK

The 50 acre EIP, the Port, GreenField Ethanol and 370 acres of Township owned industrial land



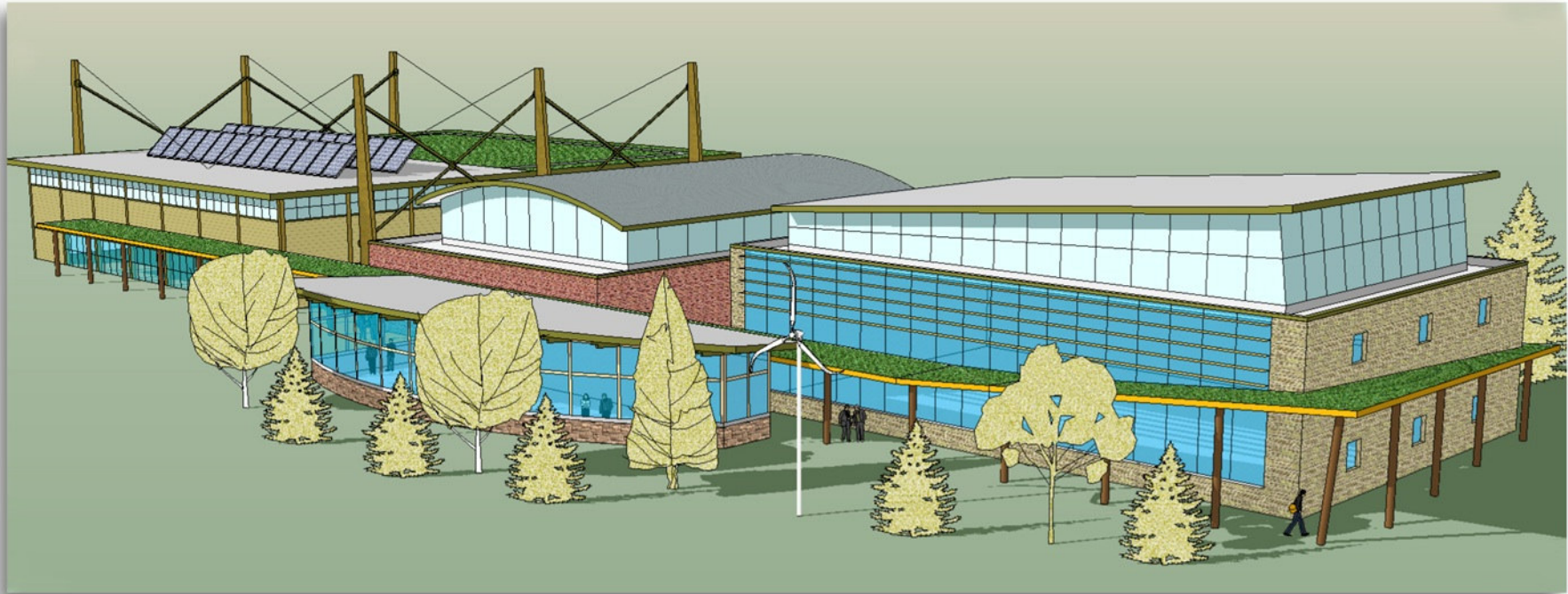
Ontario East Wood Centre
& ECO-INDUSTRIAL PARK

Building the Vision for an eco-industrial park based on wood fibre



**Ontario East Wood Centre
& ECO-INDUSTRIAL PARK**

Preliminary Concepts: LEED standards recommended (Leadership in Environmental and Energy Design)



Totten Sims
Hubicki Associates



Ontario East Wood Centre
& ECO-INDUSTRIAL PARK

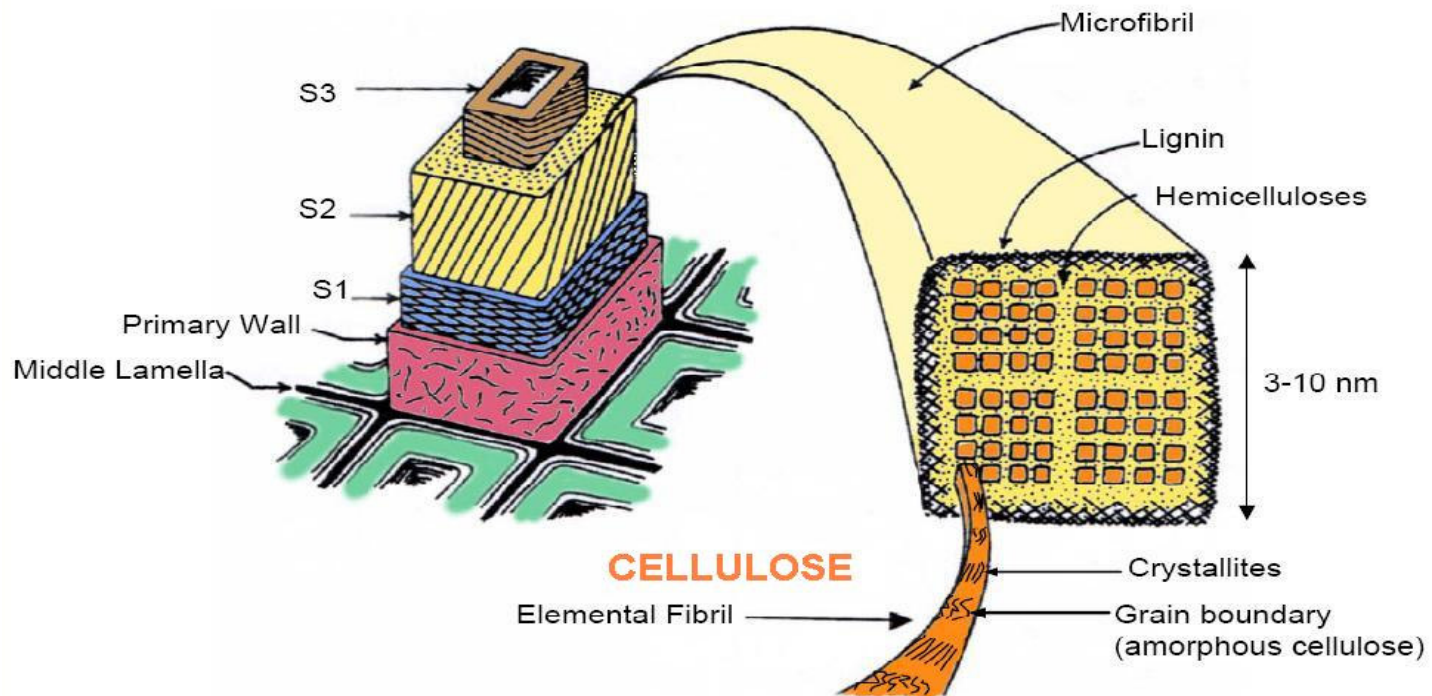
The Implementation Team

- Eight talented people: foresters, MBAs, researchers, entrepreneurs ...
- Out into communities, universities and forest and wood related business, advancing the concept
- Tools designed by TD Graham + Associates



Ontario East Wood Centre
& ECO-INDUSTRIAL PARK

The Science - new potential



Industry Canada Nov 2005

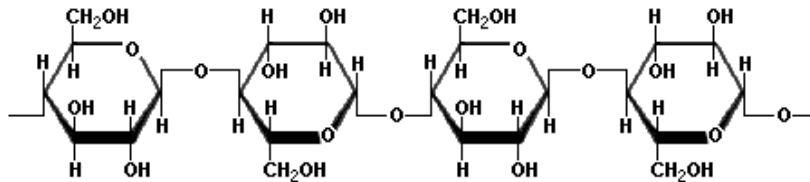


Ontario East Wood Centre
& ECO-INDUSTRIAL PARK

Cellulose - important molecule!!

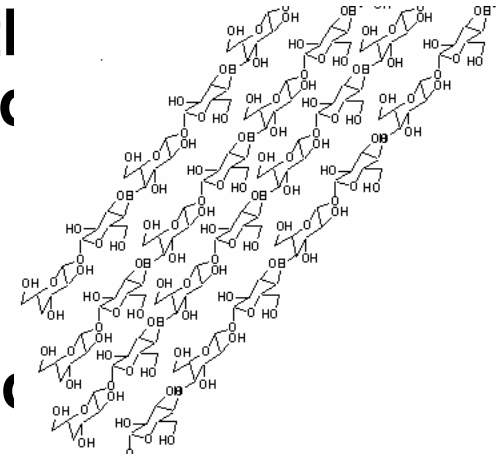
Linear homopolymer composed of several thousand β -D-glucose units linked

AI



contact and bond to one another.

ains to c



3 hydroxyl groups available on each glucose unit

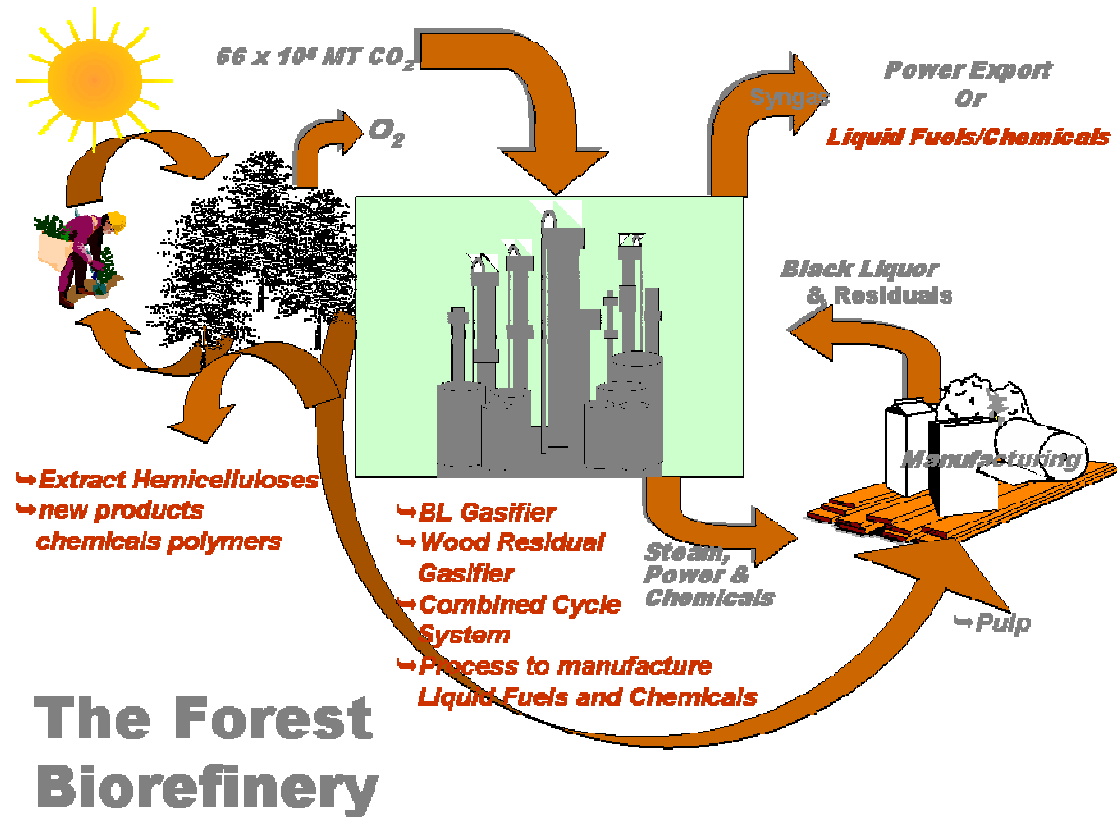
- Many OH groups make it very hydrophilic
- Forms a very strong, rigid structure through lateral bonding of hydroxyl and oxygen.
- Crystalline regions and amorphous regions

» University of Toronto; Faculty of Forestry



Ontario East Wood Centre
& ECO-INDUSTRIAL PARK

Solid wood, energy and valuable extractives too



Ontario East Wood Centre
& ECO-INDUSTRIAL PARK

SUNY, Faculty of
Environment and
Forestry

Benefits to university partners:

1. Research partnerships with a range of companies, topics and products.
2. Topics from forest inventory and transportation, to engineering, to nano-technology - to socio-economic research
3. Incubator space for developing research to the next stage, lab to product
4. Training of students, internships, employment
5. Mentoring of new companies, including consulting contracts
6. Space to build pilot plants and other facilities
7. Cost-sharing and availability of a wide range of wood materials, and other forest related plant materials
8. Access to IRAP resources and funding, anticipated MOU between IRAP and EOMF
9. Diversity of universities and professors for synergy and collaboration
10. Research, Development *and* Demonstration



Ontario East Wood Centre
& ECO-INDUSTRIAL PARK

The challenges

1. Defining the right working relationships
2. Improving bio-feedstocks info and infrastructure
3. Enabling trusting collaboration
4. Inspiring internal stakeholders
5. Building on heritage relationships
6. The complexity of many connected features
7. Maintaining focus
8. Managing our energy
9. Ensuring the right skills for wide variety of tasks
10. Different partners; different cultures
11. Integrating a wide variety of Canada and Ontario action plans



Ontario East Wood Centre
& ECO-INDUSTRIAL PARK

“Co-operation is the way to survive”

- EOMF
- Township of
Edwardsburgh/Cardinal
- Ontario Ministry of Natural
Resources
- Akwesasne Department of
the Environment
- Canadian Forest Service
- Woodlot owners
- Environment Canada
- Ontario MOE
- Community Futures
Development Corporations
- Politicians
- FSC and Smartwood
- University of Toronto
- National Research Council
Canada
- Land Stewardship Councils
- Sawmillers
- Value added wood industry
- State University of New York;
Syracuse
- United Counties of Leeds &
Grenville
- Ferguson Forest Station
- BIOCAP (in past)
- Poplar Council of Canada
- Queen’s and Guelph
Universities and...



Ontario East Wood Centre
& ECO-INDUSTRIAL PARK

Acknowledgements

- Sally Krigstin, Faculty of Forestry U of T
- Ian Manson, OMNR
- Brian Barkley, EOMF
- Township of Edwardsburgh/Cardinal
- SUNY; Faculty of Forestry and the Environment
- TD Graham + Associates
- Totten Sims Hubicki Assoc.
- Sandra S.Lawn & Associates Inc.



Ontario East Wood Centre
& ECO-INDUSTRIAL PARK